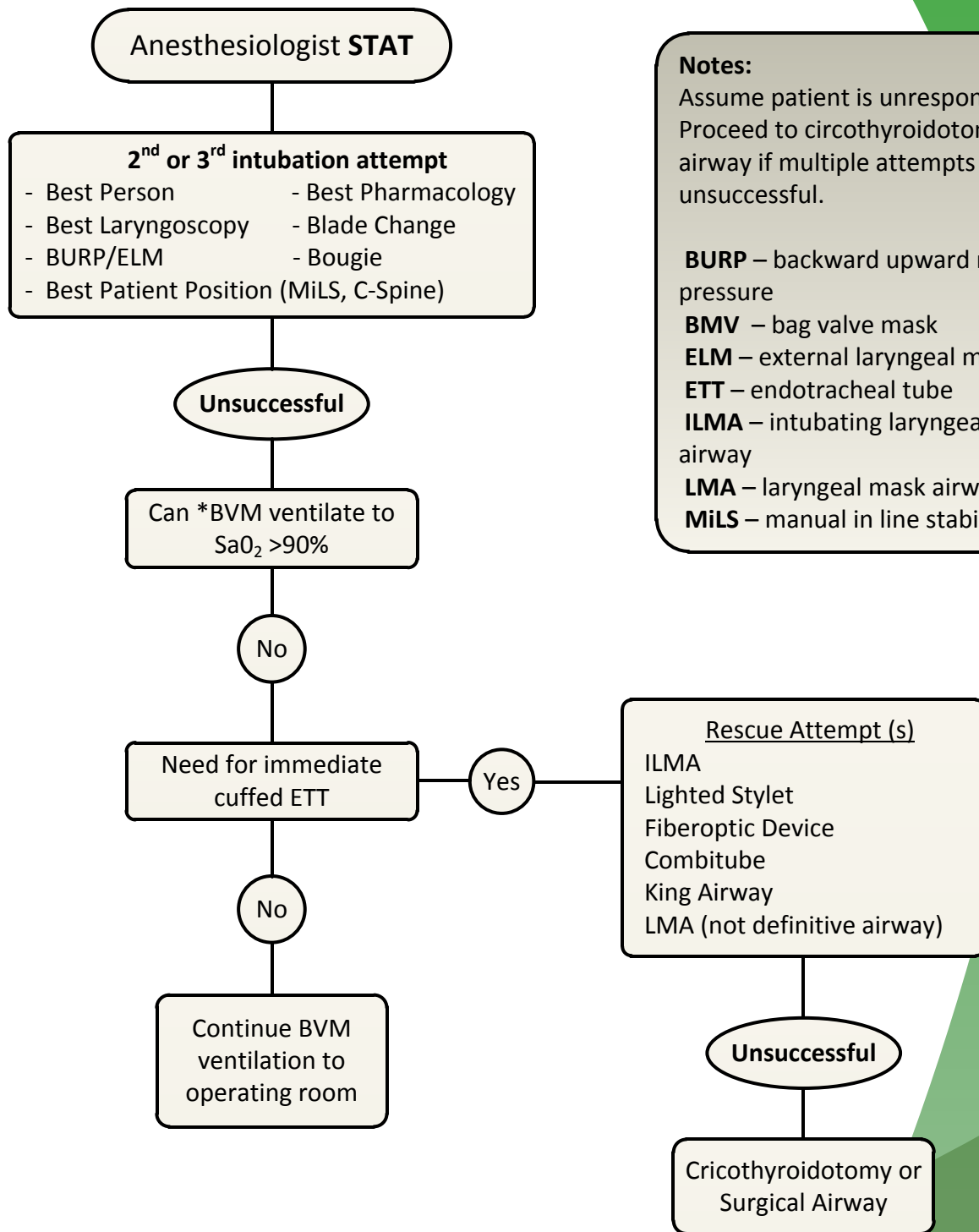


Difficult Airway Algorithm



Notes:

Assume patient is unresponsive.
Proceed to cricothyroidotomy/surgical airway if multiple attempts have been unsuccessful.

BURP – backward upward rightward pressure

BMV – bag valve mask

ELM – external laryngeal manipulation

ETT – endotracheal tube

ILMA – intubating laryngeal mask airway

LMA – laryngeal mask airway

MiLS – manual in line stabilization

